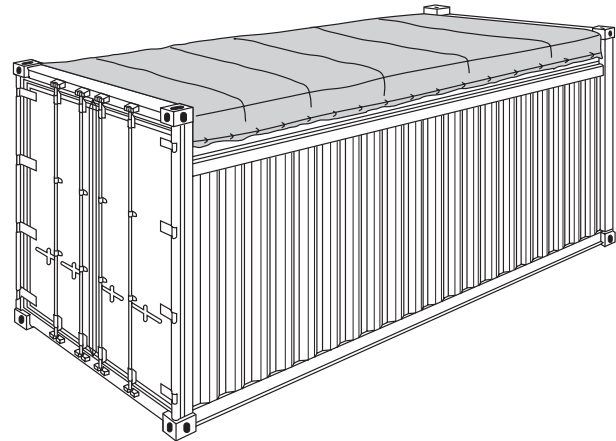


Open Top Container

20'

ISO Size Type Code: 22 U1



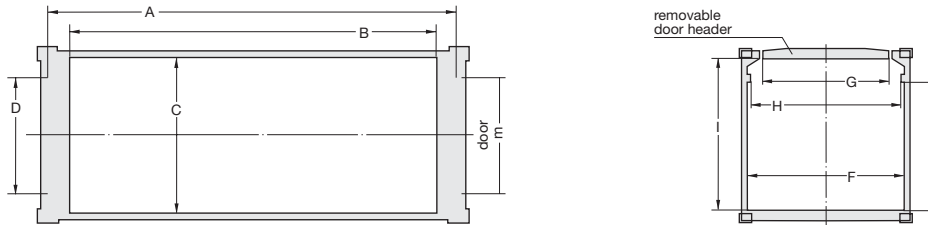
- Especially for
 - overheight cargo
 - loading from top side, e.g. by crane
 - loading from door side, e.g. with cargo hanging from overhead tackle
- Floor Height 170 mm - 5mm (Ground level to interior floor surface)
- Door header can be swung out on all open top containers
- If required, we can provide disposable tarpaulins. For fastening tarpaulins, lashing bars are available on the outside of the walls. Using one way tarpaulins requires the corner castings to be accessible.
- Fork-lift pockets for loaded containers.
- Numerous lashing devices on the top and bottom longitudinal rails and the corner posts. Lashing devices have a permissible load of 1 000 kg (2 205 lbs) each.

Cigisped: ph: +39 010 8607214 +39 010 815873 - cigisped@cigisped.it - www.cigisped.it

Open Top Container

20'

Construction	Inside Dimensions				Weights			Capacity
	Length	Width	Height		Max. Gross kg lbs	Tare kg lbs	Max. Payload kg lbs	
			Middle mm ft	Side mm ft				m ³ cu.ft
8'6" high								
Steel container with corrugated walls, wooden floor and removable tarpaulin	5 888 19'3 ³ / ₄ "	2 345 7'8 ¹ / ₈ "	2 365 7'9"	2 315 7'7 ¹ / ₈ "	30 480 67 200	2 250 4 960	28 230 62 240	32,0 1 130



Roof Openings

Length		Width		
A	B	C	D	E
Max.	Between gusset plates	Max.	Front between gussets	Door between gussets
mm	mm	mm	mm	mm
ft	ft	ft	ft	ft

8'6" high

5 415 17'9 1/8"	5 360 17'7"	2 205 7'2 3/4"	na na	1 880 6'2"
--------------------	----------------	-------------------	----------	---------------

Door Openings

Width			Height	
F	G	H	I	K
Max.	At door header	Between top rails	Up to door header	Up to top rail
mm	mm	mm	mm	mm
ft	ft	ft	ft	ft

2 335 7'8"	1 880 6'2"	2 205 7'2 3/4"	2 280 7'5 3/4"	2 125 6'11 5/8"
---------------	---------------	-------------------	-------------------	--------------------